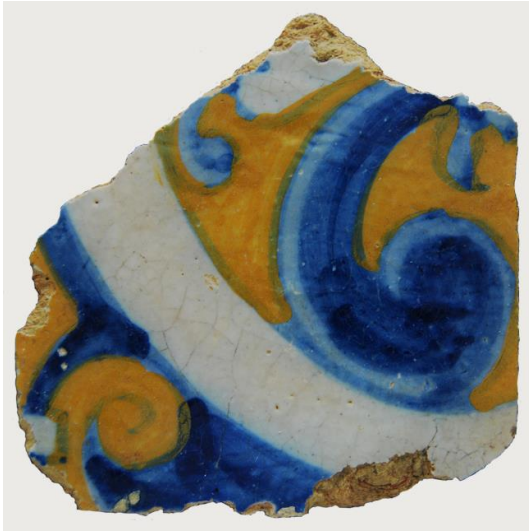


AzuRe263



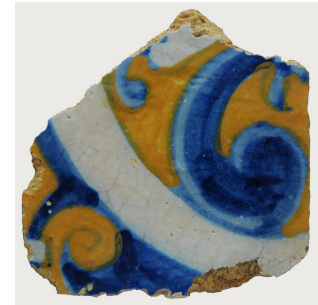
Descrição: Azulejo do século XVII (1620-1670); Origem: Lisboa.

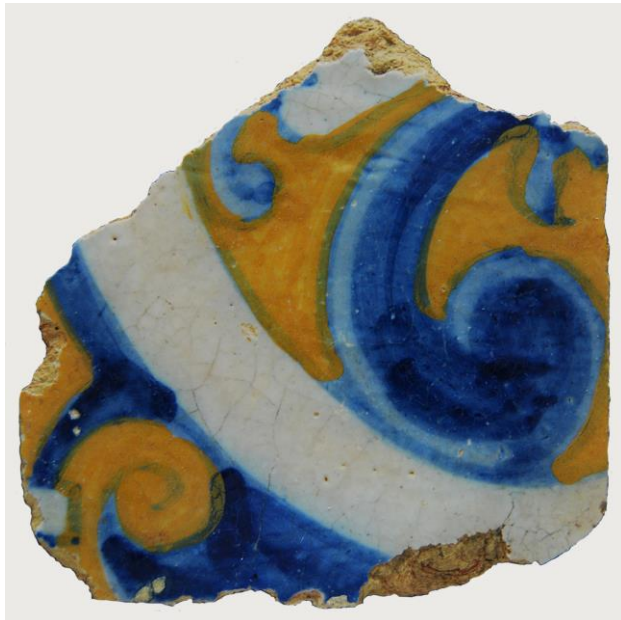
Amostras: Fragmentos e uma secção semi-polida em depósito no *Museu Nacional do Azulejo* em Lisboa.

Índice

- **Caracterização Morfológica**
 - ✓ Imagens macroscópicas
 - ✓ Imagens de microscopia electrónica (SEM)
- **Caracterização Química/Mineralógica**
 - ✓ Análise por SEM/EDS
 - ✓ Análise por XRF

AzuRe263





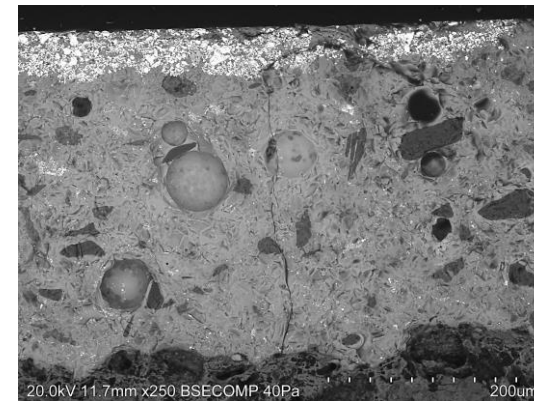
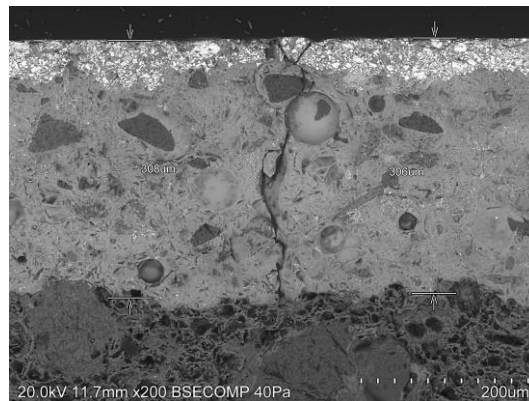
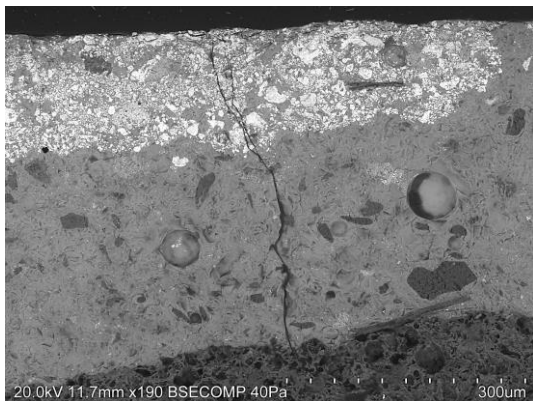
Azulejo com craquelé muito demarcado e algumas linhas de fissura a partir das arestas.



- Espessura do Azulejo = 14 mm

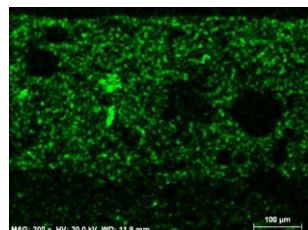
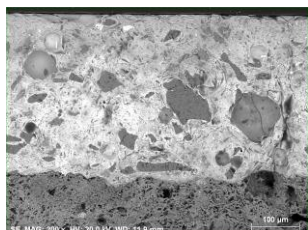


Chacota amarelada com grandes e pequenos poros circulares e alongados; filamentos de barro vermelho com efeito marmoreado; inclusões (as vermelhas de grande dimensão); grandes vazios alongados; areias.

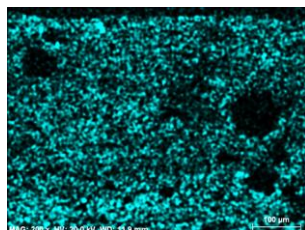


- Observa-se craquelé.
- Espessura do Vidrado = 306-308 µm

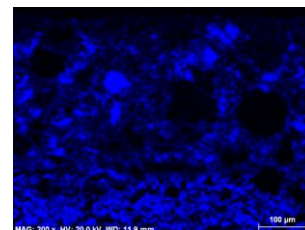
Equipamento: Microscópio eletrónico de varrimento HITACHI 3700N acoplado a um espectrómetro de energia dispersiva de raios-X Bruker Xflash 5010.



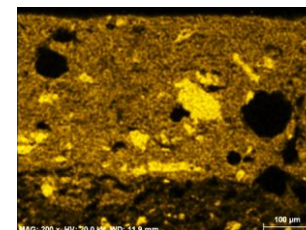
Na



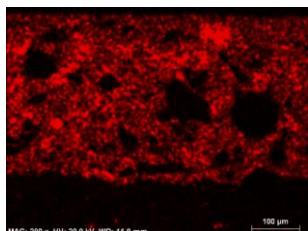
Mg



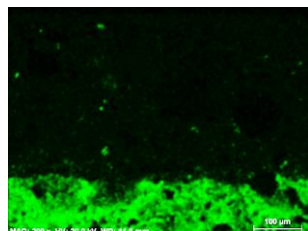
Al



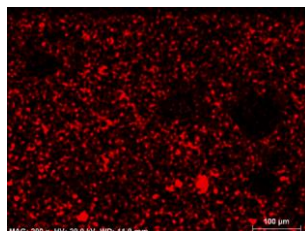
Si



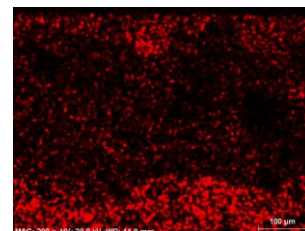
K



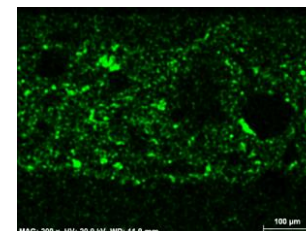
Ca



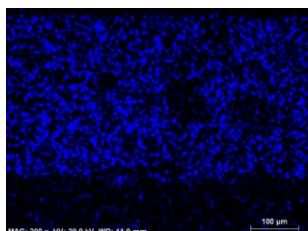
Ti



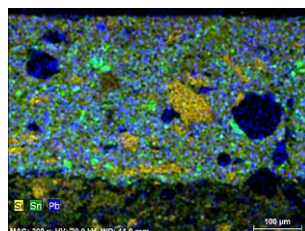
Fe



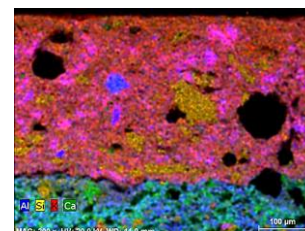
Sn



Pb



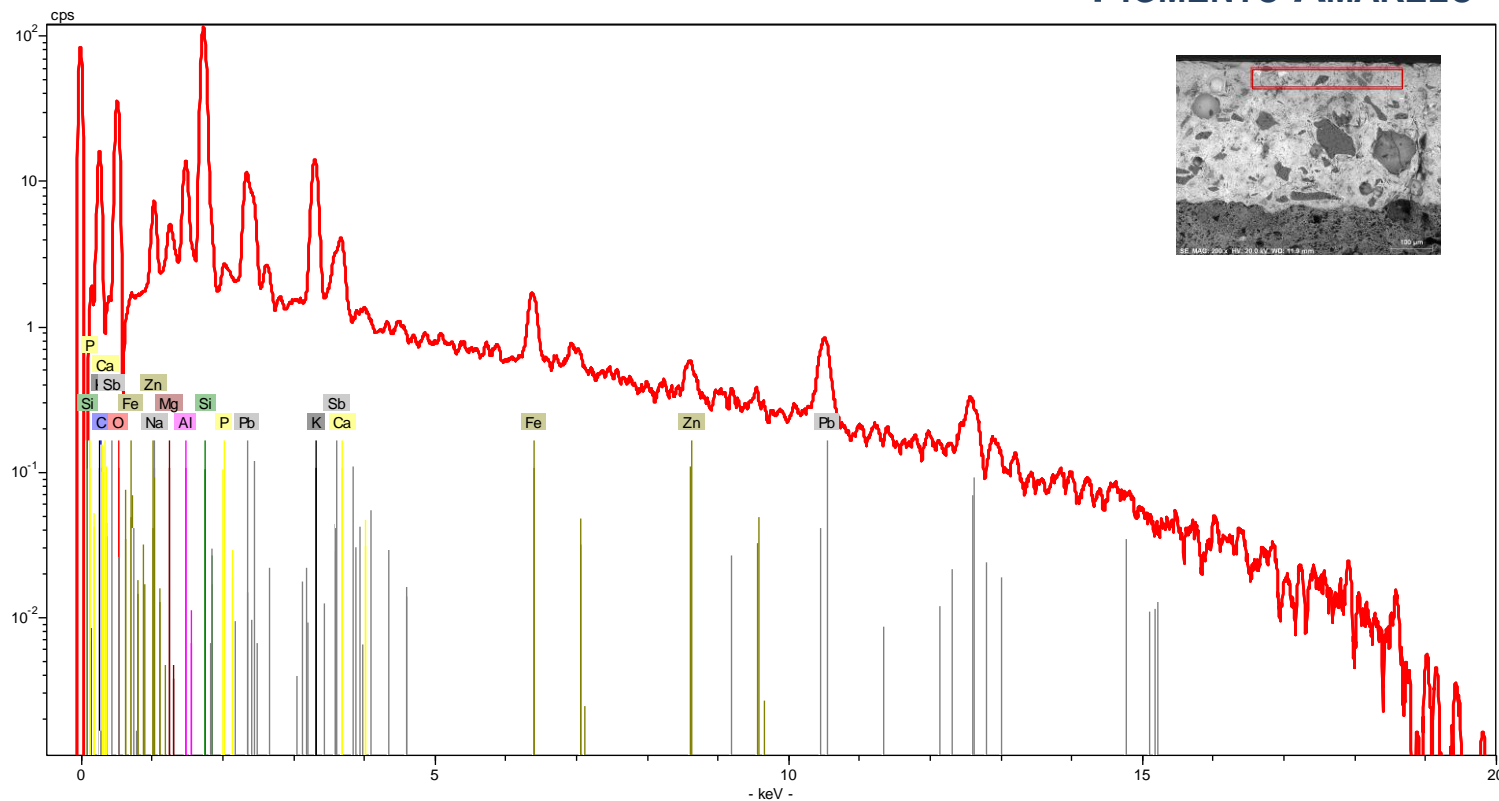
Combinação
Si_Sn_Pb



Combinação
Al_Si_K_Ca

Equipamento: Microscópio eletrônico de varrimento HITACHI 3700N acoplado a um espectrómetro de energia dispersiva de raios-X Bruker Xflash 5010.

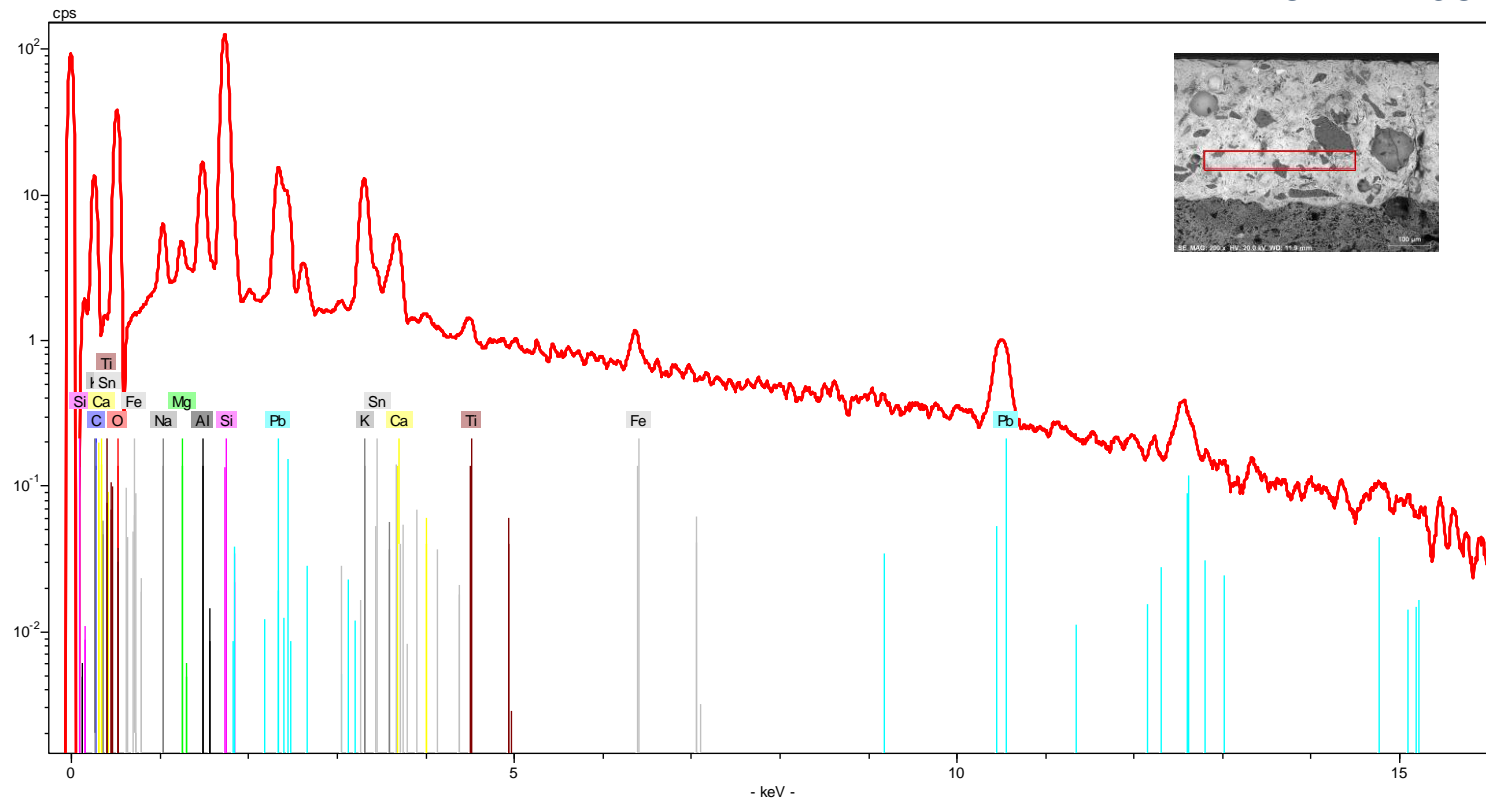
PIGMENTO AMARELO



[Azure263 EDS Amarelo.xls](#)

Equipamento: Microscópio eletrónico de varrimento HITACHI 3700N acoplado a um espectrómetro de energia dispersiva de raios-X Bruker Xflash 5010.

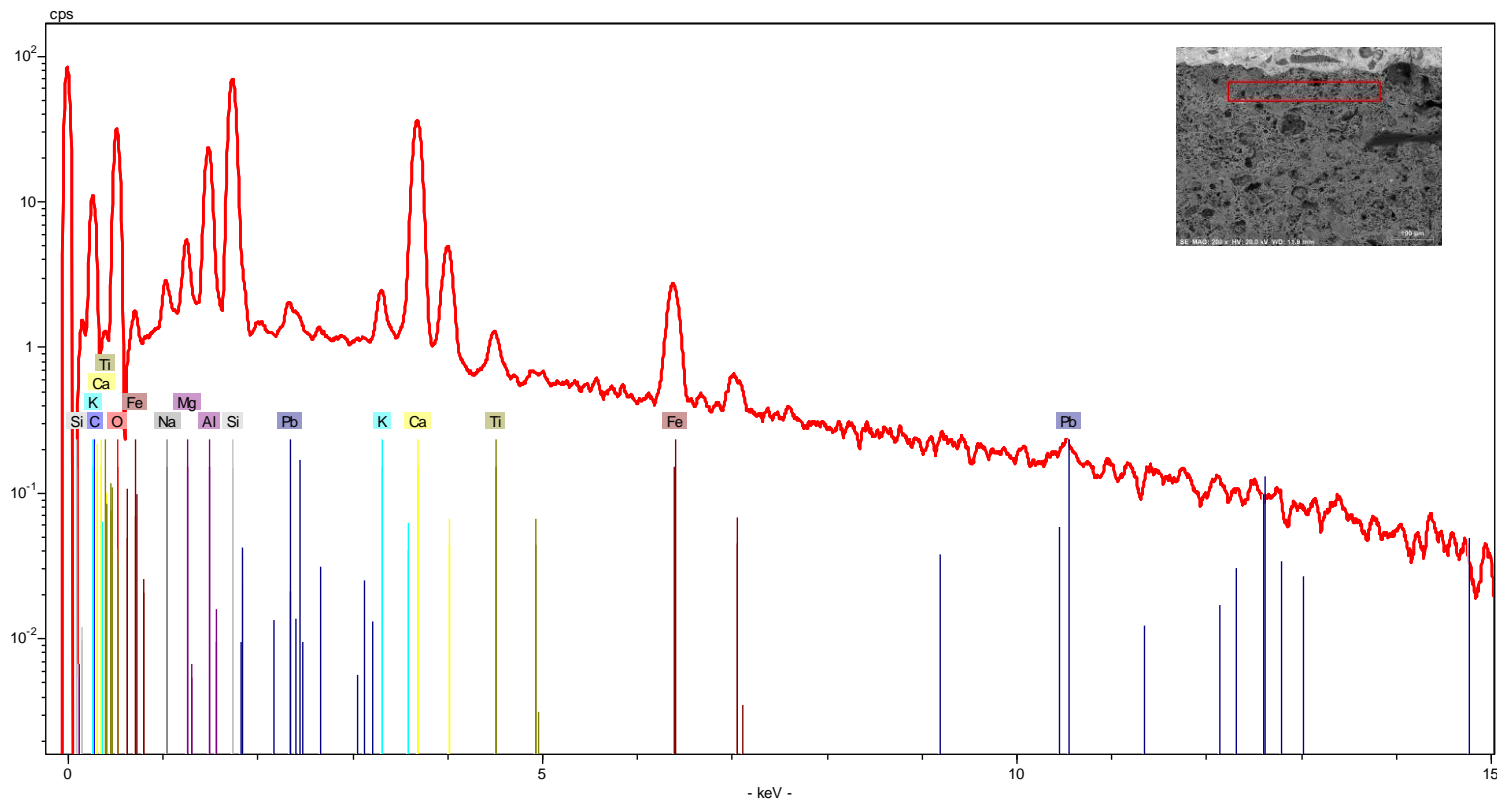
VIDRADO BRANCO



[AzuRe263 EDS Vidrado.xls](#)

Equipamento: Microscópio eletrónico de varrimento HITACHI 3700N acoplado a um espectrómetro de energia dispersiva de raios-X Bruker Xflash 5010.

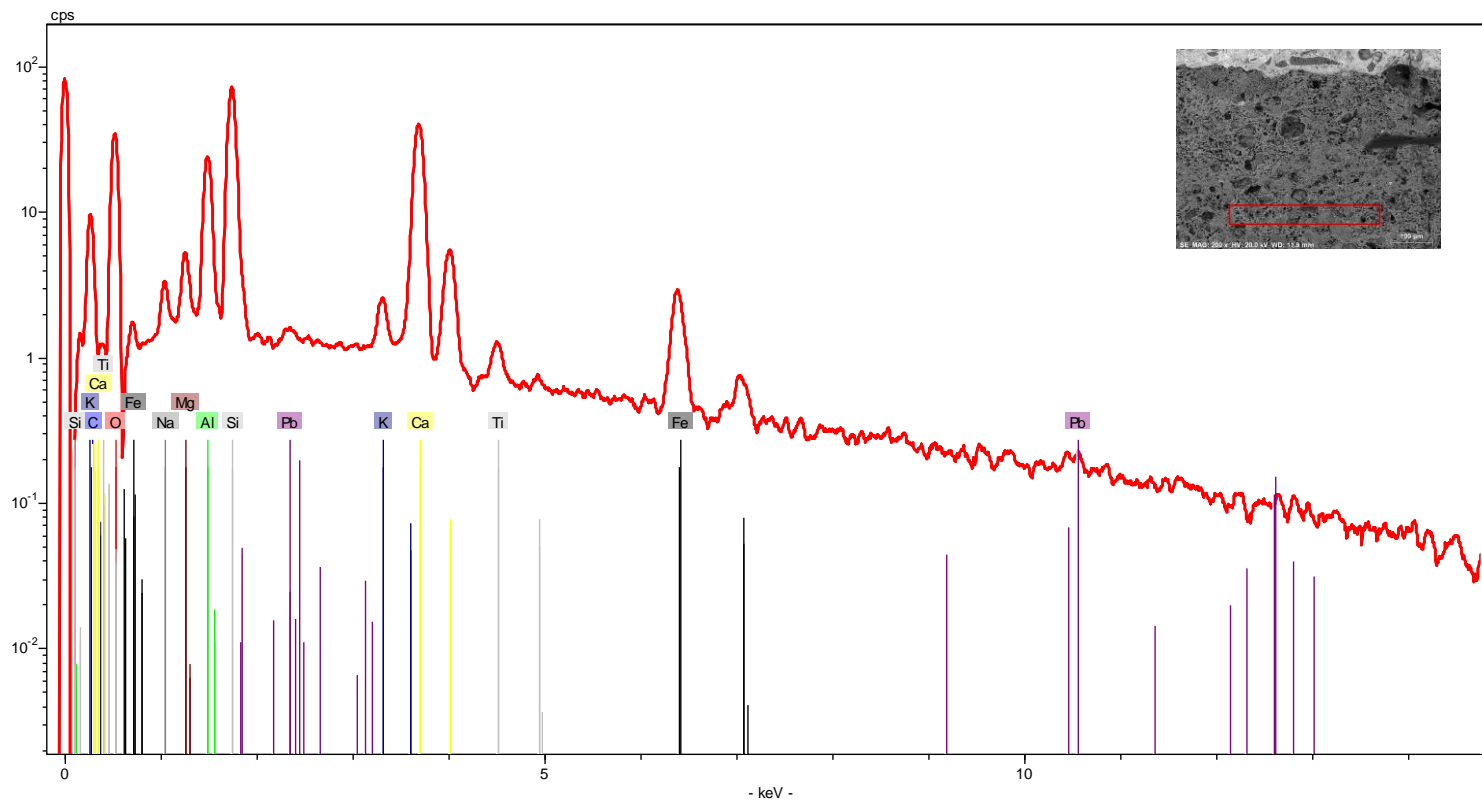
INTERFACE



[Azure263 EDS Interface.xls](#)

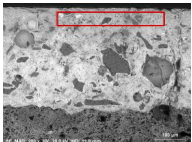
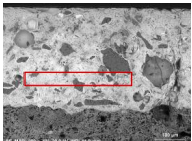
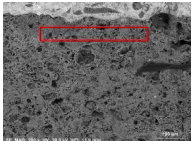
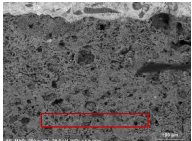
Equipamento: Microscópio eletrónico de varrimento HITACHI 3700N acoplado a um espectrómetro de energia dispersiva de raios-X Bruker Xflash 5010.

CHACOTA

[AzuRe263 EDS Chacota.xls](#)

Equipamento: Microscópio eletrónico de varrimento HITACHI 3700N acoplado a um espectrómetro de energia dispersiva de raios-X Bruker Xflash 5010.

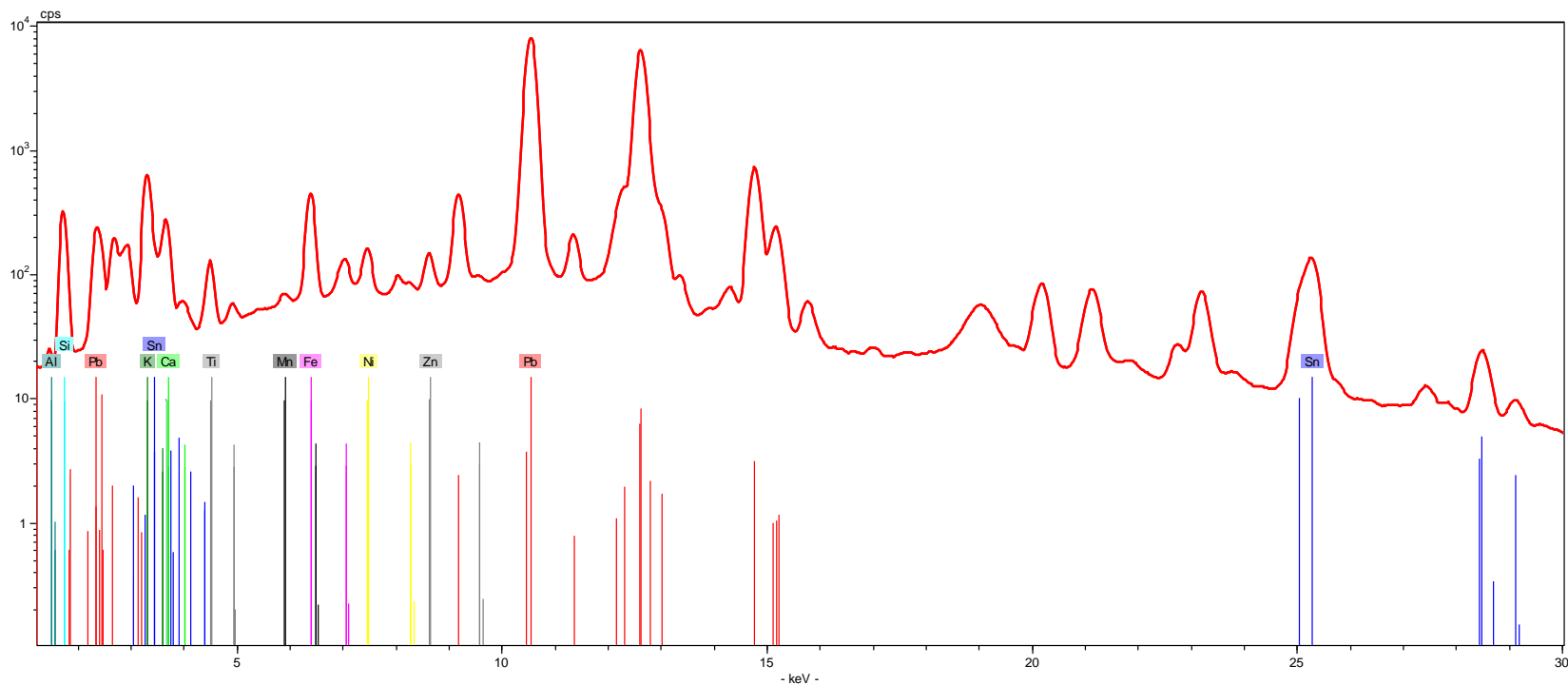
Composição química (% m/m)*

Área Analisada	Na	Mg	Al	Si	P	K	Ca	Ti	Fe	Zn	Sn	Sb	Pb
 pigmento amarelo	3,05	1,77	5,49	44,67	0,89	12,08	3,16	--	2,98	1,32	n.d.	1,08	23,50
 vidrado branco	2,83	1,18	6,07	45,58	--	10,66	4,40	0,53	0,94	--	a)	--	27,81
 chacota (próximo interface)	1,45	2,47	12,08	33,41	--	1,40	38,65	1,10	6,75	--	--	--	2,70
 chacota	1,72	2,21	11,67	32,81	--	1,40	40,65	0,99	0,59	--	--	--	1,95

* - Os valores apresentados na tabela correspondem às percentagens mássicas dos elementos detetados na amostra, não considerando o teor de oxigénio e normalizados a 100% ([ver aviso](#)); a) detetado mas não quantificado; n.d. – detetado.

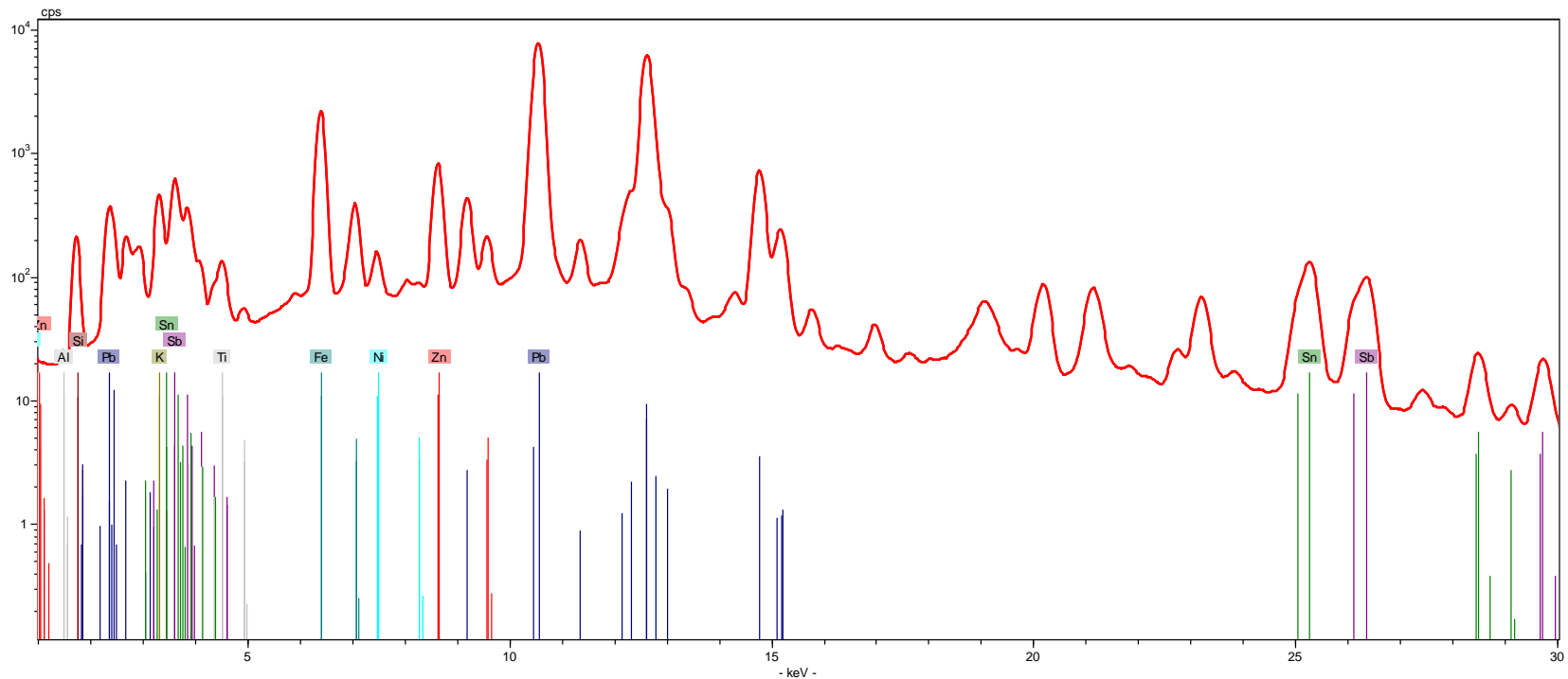
Equipamento: Microscópio eletrónico de varrimento HITACHI 3700N acoplado a um espectrómetro de energia dispersiva de raios-X Bruker Xflash 5010.

VIDRADO BRANCO

[Azure263 Branco.csv](#)

Equipamento: Espectrômetro portátil por fluorescência de raios-X Bruker Tracer III-SD.

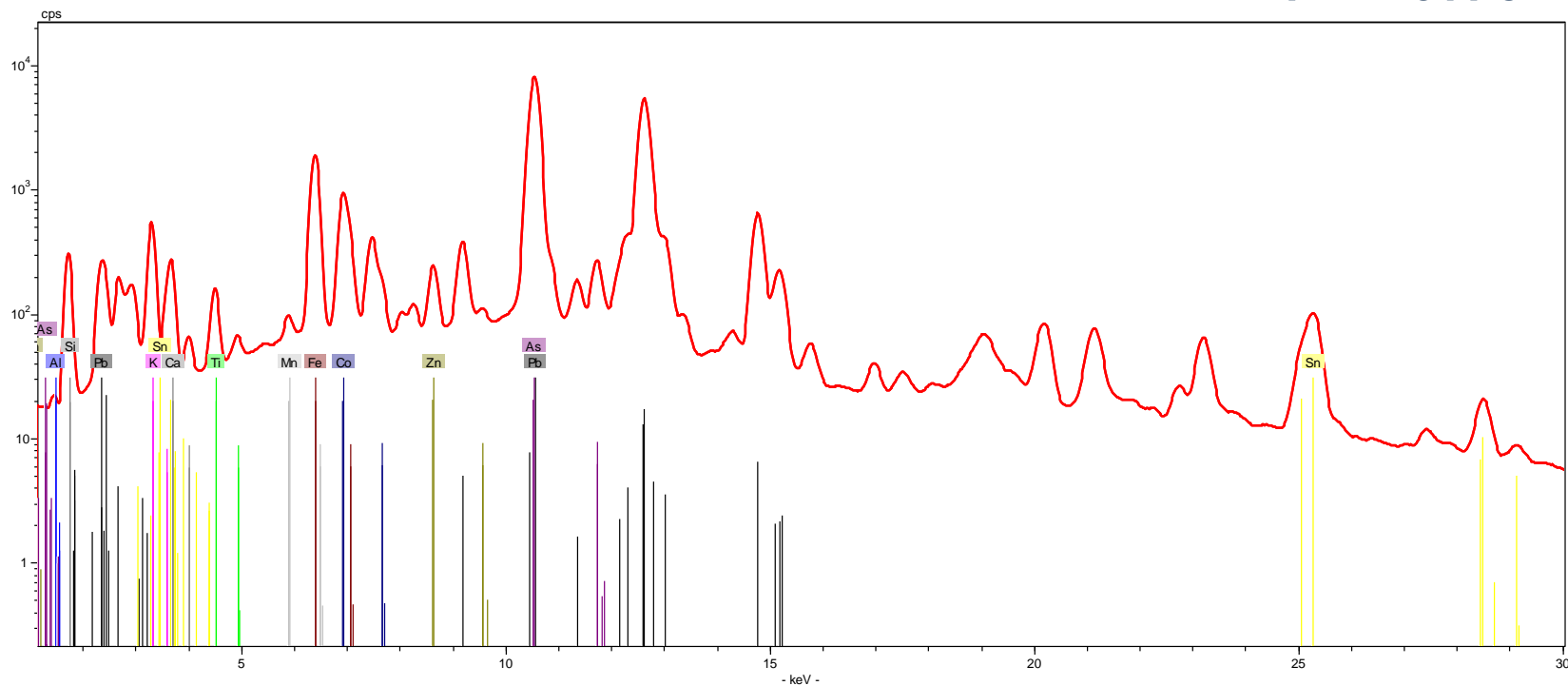
VIDRADO AMARELO



[AzuRe263 Amarelo.csv](#)

Equipamento: Espectrómetro portátil por fluorescência de raios-X Bruker Tracer III-SD.

VIDRADO AZUL

[AzuRe263 Azul.csv](#)

Equipamento: Espectrómetro portátil por fluorescência de raios-X Bruker Tracer III-SD.